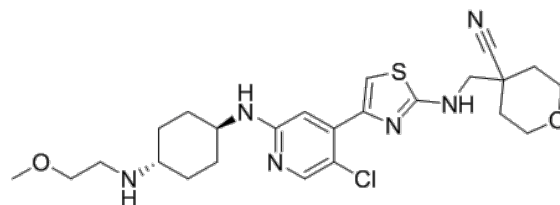


Product Name : JSH-150
Cat. No. : PC-35688
CAS No. : 2247481-21-4
Molecular Formula : C₂₄H₃₃ClN₆O₂S
Molecular Weight : 505.078
Target : Cyclin-dependent Kinase (CDK)
Solubility : 10 mM in DMSO



Biological Activity

JSH-150 (JSH150) is a potent, highly selective inhibitor of **CDK9** kinase with IC₅₀ of 1 nM in the biochemical assays, displays 300-10000-fold selectivity over other CDK kinase family members (CDK7 IC₅₀=1.72 uM).

JSH-150 also exhibits high selectivity over other 468 kinases/mutants (KINOMEScan S score(1) = 0.01).

JSH-150 displays potent antiproliferative effects against melanoma, neuroblastoma, hepatoma, colon cancer, lung cancer as well as leukemia cell lines, dose-dependently inhibits the phosphorylation of RNA Pol II, suppresses the expression of MCL-1 and c-Myc, arreststhe cell cycle and induces the apoptosis in the leukemia cells.

JSH-150 completely suppresses the tumor progression in MV4-11 cell-inoculated xenograft mouse model (10 mg/kg).

References

Wang B, et al. *Eur J Med Chem.* 2018 Oct 5;158:896-916.

Caution: Product has not been fully validated for medical applications. Lab Use Only!

E-mail: tech@probechem.com